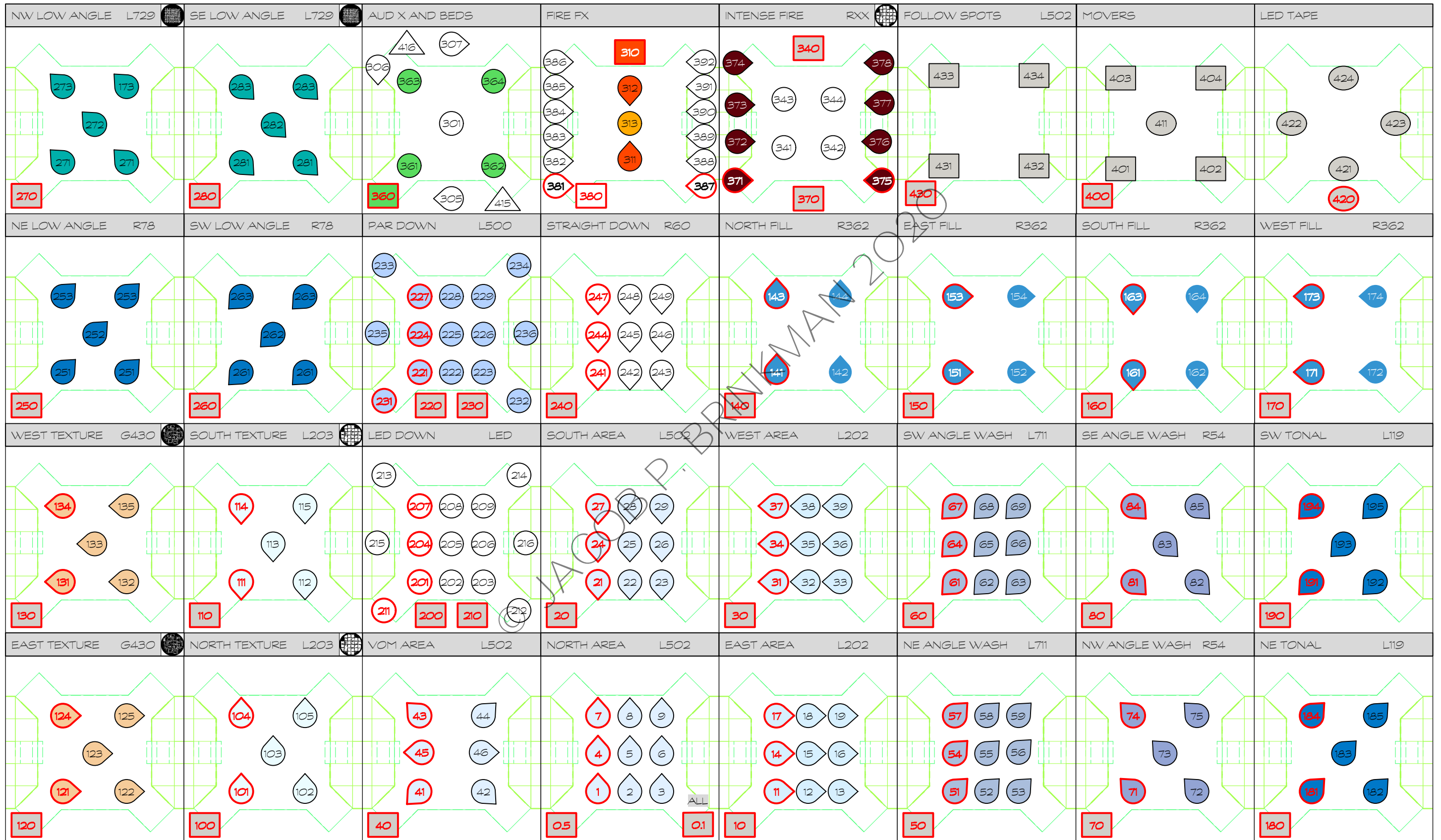


PARLIAMENT SQUARE MAGIC SHEET



PARLIAMENT SQUARE MAGIC SHEET

| MACROS | |
|--------|---------------------|
| 11 | AUTO BLOCK CLEAN |
| 101 | ALL NIPS |
| 151 | BLOCK |
| 156 | I BLOCK |
| 201 | RECORD PRESET |
| 202 | UPDATE PRESET |
| 601 | SHOW CONTROL ON/OFF |
| 400 | BREAK |
| 701 | HOUSE UP |
| 702 | HOUSE OUT |
| 703 | WORKS UP |
| 704 | WORKS OUT |
| 705 | RUN UP |
| 706 | RUN OUT |
| 707 | HOUSE/WORK/RUN OUT |

| EFFECTS | |
|---------|----------------|
| 1 | ON/OFF SPREAD |
| 2 | ON OFF GROUP 1 |
| 3 | FLICKER |
| 915 | RAMP |
| 916 | INVERTED RAMP |

| COLOR PALETTES | |
|----------------|----------------------------|
| 80 | R80 BLUE |
| 54 | R54 LAV |
| 20 | R20 ORANGE |
| 26 | R26 RED |
| 58 | R58 PURPLE |
| 60 | R60 LT BLUE |
| 138 | L138 LT GREEN |
| 139 | L139 GREEN |
| 172 | L172 LAGOON BLUE |
| 119 | L119 DEEP BLUE |
| 200 | L200 DOUBLE CT BLUE |
| 201 | L201 FULL CT BLUE |
| 202 | L202 1/2 CT BLUE |
| 203 | L203 1/4 CT BLUE |
| 500 | L500 FULL NEW CT BLUE |
| 711 | L711 THAT COLOR NITA LIKES |
| 1 | HOSPITAL 1 |
| 2 | HOSPITAL 2 |
| 3 | HOSPITAL 3 |
| 4 | HOSPITAL 4 |
| 11 | MEMORY |
| 14 | MUM AND CAT |

| FOCUS PALETTES | |
|----------------|-------------|
| 1 | AREA 1 |
| 2 | AREA 2 |
| 3 | AREA 3 |
| 4 | AREA 4 |
| 5 | AREA 5 |
| 6 | AREA 6 |
| 7 | AREA 7 |
| 8 | AREA 8 |
| 9 | AREA 9 |
| 11 | VOM 1 |
| 12 | VOM 2 |
| 13 | VOM 3 |
| 14 | VOM 4 |
| 15 | AUD L |
| 16 | AUD R |
| 21 | FULL WASH |
| 22 | FULL WASH 2 |

| BEAM PALETTES | |
|---------------|---------------|
| 14 | 14 HARD |
| 15 | 14 SOFT |
| 19 | 19 HARD |
| 20 | 19 SOFT |
| 26 | 26 HARD |
| 27 | 26 SOFT |
| 36 | 36 HARD |
| 37 | 36 SOFT |
| 50 | 50 HARD |
| 51 | 50 SOFT |
| 70 | 70 HARD |
| 71 | 70 SOFT |
| 101 | SMALL SQUARES |
| 102 | MED SQUARES |
| 103 | LG SQUARES |

| HOUSE & RUN | |
|-------------|----------|
| 450 | HAZE |
| 451 | HAZE FAN |
| 321 | AUD FIRE |
| 322 | AUD FIRE |
| 323 | AUD FIRE |
| 324 | AUD FIRE |
| 331 | GRID 1 |
| 332 | GRID 2 |
| 333 | GRID 3 |

| INTENSITY PALETTES | |
|--------------------|-----------------|
| 1 | RUN LIGHTS |
| 2 | EGRESS LIGHTING |

| HOUSE & RUN | |
|-------------|-----------------|
| 501 | HOUSE |
| 502 | HOUSE |
| 503 | HOUSE |
| 504 | HOUSE |
| 505 | HOUSE |
| 511 | EGRESS |
| 512 | EGRESS |
| 521 | RUN LIGHT |
| 522 | RUN LIGHT |
| 525 | RUN LIGHT |
| 531 | BLUE ROPE LIGHT |

© JACOB P. BRINKMAN 2020