

COMPANY

The following is a lighting worlds treatment for the University California at Irvine's Drama production of *Company* produced at the Irvine Barclay Theatre. This document includes initial ideas and concepts for the lighting in this production. It is a working document and any feedback is greatly appreciated.

Company follows the story of Robert on the night of his 35th birthday in New York city in the 1970s. Robert has a group of friends that are "Good and Crazy People" and are all married in various stages of their relationships; ranging from about to be married, going through a divorce, and married a few times for many years. Throughout the show we are introduced to a series of dinner parties, dates, and thought provoking conversations that help Robert weigh out the pros and cons of being married. The heart of the show is about Robert finding himself in the busy city of New York while battling the fact that the city tends to alienate people and amplify their feelings of being alone.

I see this musical with a clear palette and strong stunning lighting moments to support Robert throughout his desires to feel connected. I envision the lighting for *Company* set in three main lighting worlds. The first world revolves around Robert and how he portrays his thoughts to the audience, while working to find himself. The second world relates to the various apartments of his friends. The final lighting world begins in Act Two after his song "Marry Me a Little" which is a breakthrough in his character to find himself.

In the first lighting world, Robert has many moments where he is internalizing and searching to find fulfillment in a partnership. While he loves being with his friends, he is constantly looking to have a more real connection with a partner. In these moments I envision the lighting to be simple and elegant, isolating him while surrounding him in cool light to help emphasize that without a partner he is receding into the background. He fights to make that connection and to truly feel alive.

The second lighting world pertains to all of the different apartments we visit. As each of the individual scenes progress we see an evolution in the light treatment for them. Initially these apartments are warm, comforting and welcoming for Robert as his friends genuinely want to be with him so he is not alone. At key moments of the scene, the comfort and welcoming feeling will evolve as we are experiencing the show through Robert's perspective. The apartments will shift to a harsher feel reflecting Robert's disconnect from his friends.

For the third lighting world Robert sings "Marry me a Little" at the end of act one. This song is a breakthrough for him as he is starting to find himself and realize that he needs "to marry *some* body not just some *body*." As a result of this breakthrough, I will introduce saturate colors and soft organic textures that fill out the space in Robert's life as he is now ready to commit to the connections and finding the fulfillment in partnerships. These colors and soft textures will bring life and energy to Robert as he starts to feel the sensation of the uncertainties life brings. This will be a theme that reprises at the end of act two when he sings "Being Alive."

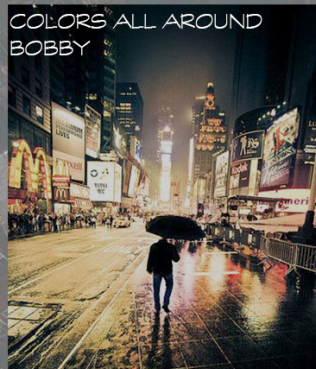
One of the main scenic elements I want to highlight are the city building facade windows. These windows will change color to help establish, and set the mood, throughout the show. These windows will act, at times, like a 70's style Disco Floor that can dance with light. I see the windows used to their full capacity in the top of act two during, "Side by Side by Side" as well as before "The Ladies who Lunch," which is set in a night club. By using the color in the windows in conjunction with the Cyclorama, I will create lighting moments that will highlight Robert's journey through the show.

The lighting for *Company* will work to enhance the connections Robert longs for, while heightening the contrast from him and his friends. He needs to work to find who he is and what he truly desires.

ALONE IN THE CITY



COLORS ALL AROUND
BOBBY



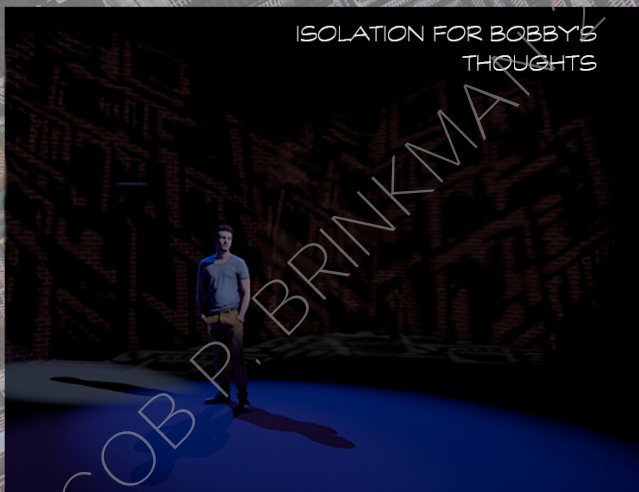
STUNNING LIGHTING MOMENTS



GRIT AND TEXTURED CITY



ISOLATION FOR BOBBY'S
THOUGHTS



CITY ALWAYS SURROUNDING



CITY WINDOWS TO MIMIC 70s
DANCE FLOOR



DANCE FLOOR WINDOW AESTHETIC



COLOR SILOUETTES FOR TRANSITIONS



COMPANY

UPB
Design





© JACOB PERKINMAN 2020

BOBBY'S THOUGHTS ACT TWO

UPB
Design

